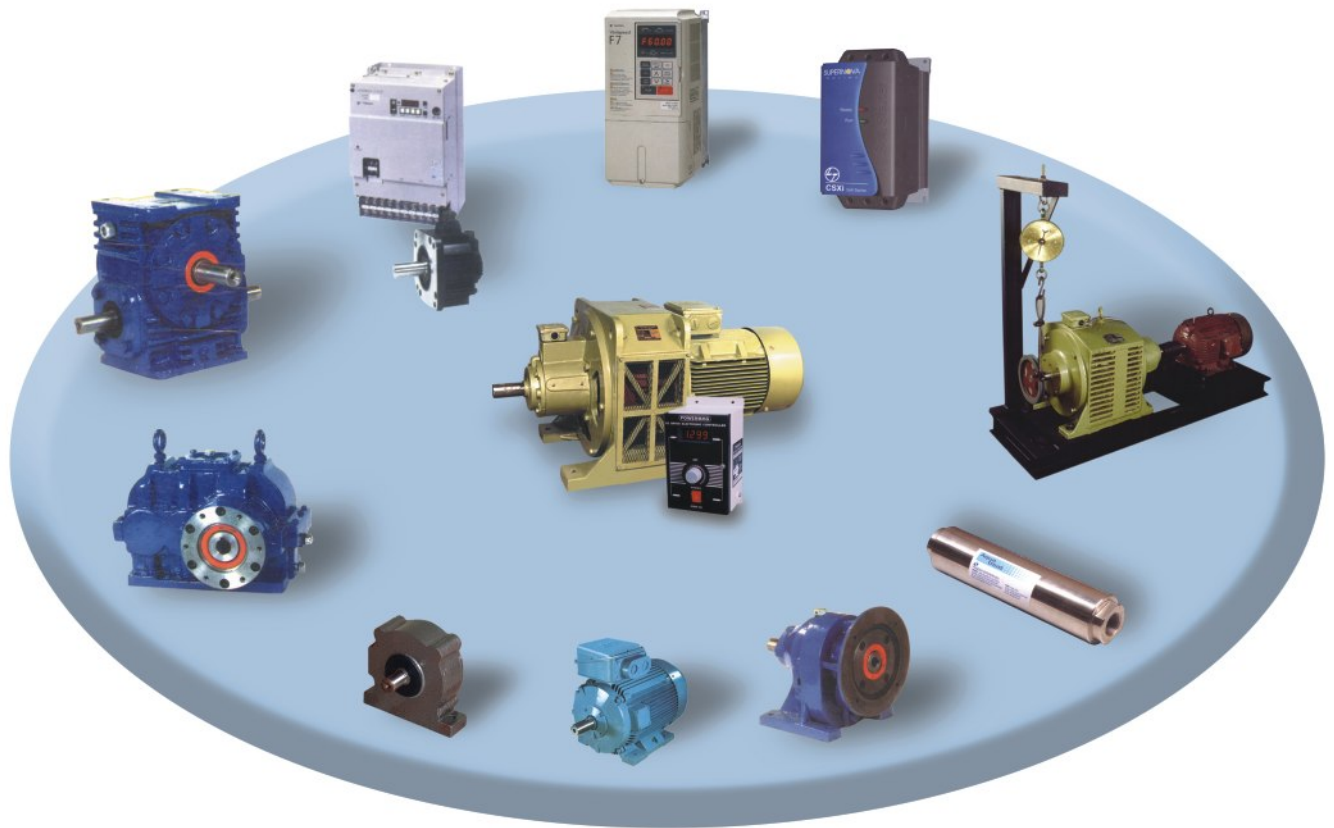


POWERMAG CONTROL SYSTEMS (P) LTD.

WORLD CLASS POWER TRANSMISSION PRODUCTS



POWERMAG

**Aqua
treat**



MAYURESH GEARS



YASKAWA



LARSEN & TOUBRO LIMITED

ABB



POWERMAG

Eddy Current Drives

- 0.2 kW to 90 kW
- Constant torque variable speed characteristic
- Speed range : 1200-120 rpm
- Integral (with motor) and Modular (without motor) design versions.
- Stationary field air-cooled variable speed drives.



POWERMAG

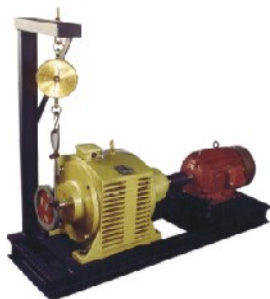
Tachogenerator

- AC Tachogenerators
- For speed sensing/control applications
- 48 pole construction
- 400 Hz per 1000 rpm
- 2 Volt AC per 100 rpm

POWERMAG

Eddy Current Dynamometer

- A versatile equipment for performance and endurance study of all types of motors, hydraulic motors, engines, gear boxes and other rotating equipments.
- Torque range : 0.24 kg-m to 56 kg-m
- Speed range : Upto 3500 rpm



Electric Motors Asea Brown Boveri, Hindustan, Oswal

- Standard Motors ● Textile Motors
- Torque Motors ● Brake Motors
- Vibratory Motors ● Crane Duty Motors
- Dual Voltage/Dual Frequency Motors
- High Torque Motors ● Multi-speed Motors - Single Winding / Separate Winding
- High Slip Motors ● Low Vibration Motors
- Motors for corrosive atmosphere
- Special / Long shaft extensions
- Flame-proof Motors ● Special flanges
- Any tailor-made motors to suit the varying electrical or mechanical specifications.

- 0.12 kW to 500 kW



MAYURESH GEARS

- Extruded gear boxes with inbuilt thrust housing used for plastics and rubber extruders.
- Standard helical gear boxes and geared motors.
- Co-rotating & counter rotating twin screw helical gear boxes, worm reduction gear boxes and FHP geared motors.



L&T - Yaskawa Varispeed

- Advanced flux vector control general purpose frequency drives with all protective functions.
- Simple, powerful, robust, compact, energy efficient
- 0.4 kW to 300 kW



L & T - Softstarters

- Total Motor starting solution
- Compact, powerful, efficient, soft start, bypass, soft stop, torque control, pump stop, soft braking
- Protection : Supply frequency, motor overload, communication failure, excess start time, phase sequence
- 3.7 kW to 800 kW

L & T - Yaskawa AC Servo Systems

- Online auto tuning ● Automatic motor discriminator function ● Mechanical resonance suppression filter ● Speed observer control ● Feed forward compensation ● Vibration Suppression control
- All-in-one control for position / speed / torque ● Absolute encoder support ● Origin search ● Brake interlock ● Regeneration & Dynamic braking
- Full conformance to CE marking, UL and cUL
- 30W to 15 kW

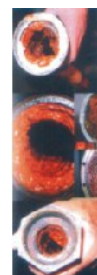


Magnetic Water Descaler

AQUATREAT controls the formation of scale and corrosion without the use of chemicals offering revitalised water. Hard water passing through AQUATREAT's superior MagnetoHydroDynamics technology causes most minerals to stay suspended in water so they cannot form a hard brittle scale.

Salient Features

- Prevents new scale formation ● Removes existing scale deposition ● Prevents corrosion ● Reduce or eliminate chemical costs ● Decrease equipment downtime ● Ease of installation ● No operational costs ● Saves energy ● Maintenance free ● Non-polluting ● Environmentally safe



POWERMAG CONTROL SYSTEMS (P) LTD.

SF No. 532, Nehru Nagar, Maniyakaranpalayam, Ganapathy, Coimbatore - 641 006, India.
Tel : 91-422-2532013, 2537990, Fax : 91-422-2537988
E-mail : info@powermag.in powermag.india@gmail.com
URL : www.powermag.in