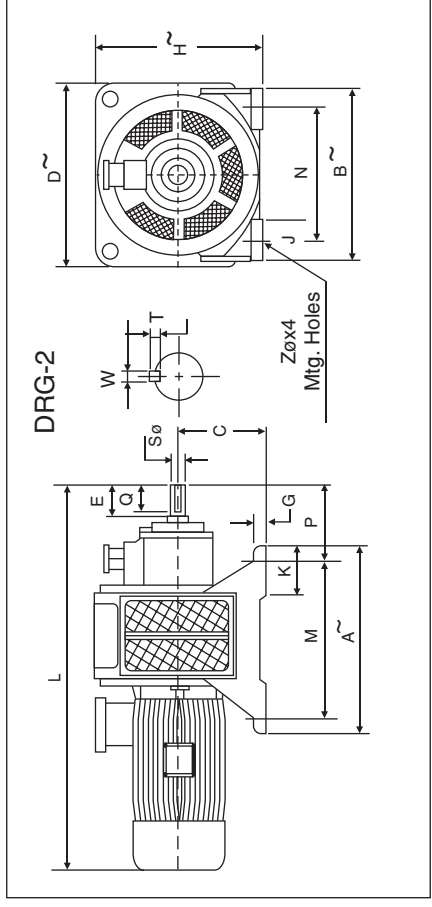
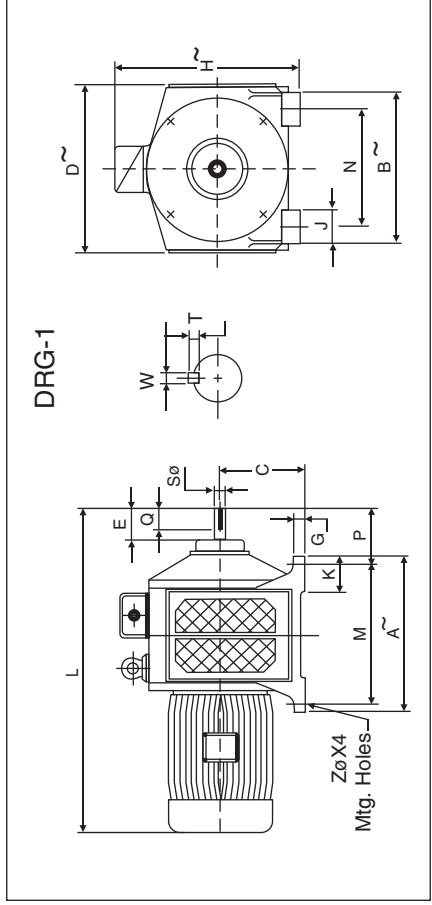


DIMENSIONAL DETAILS - POWERMAG EDDY CURRENT DRIVES - INTEGRAL DESIGN - MODEL FTAC



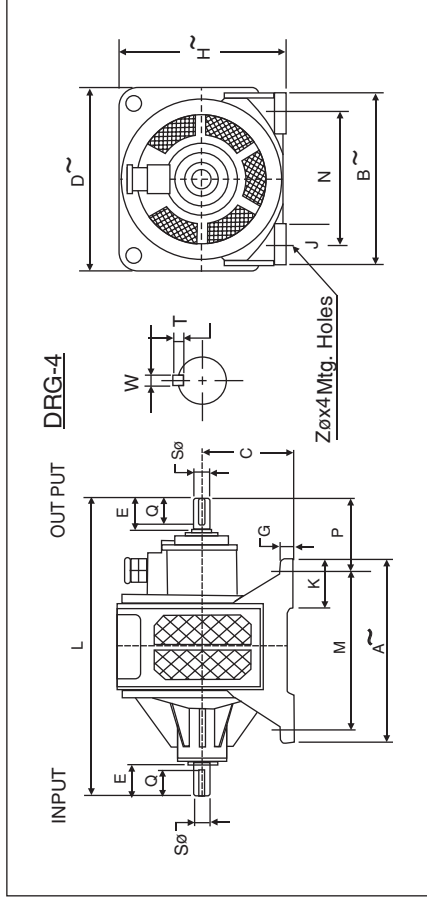
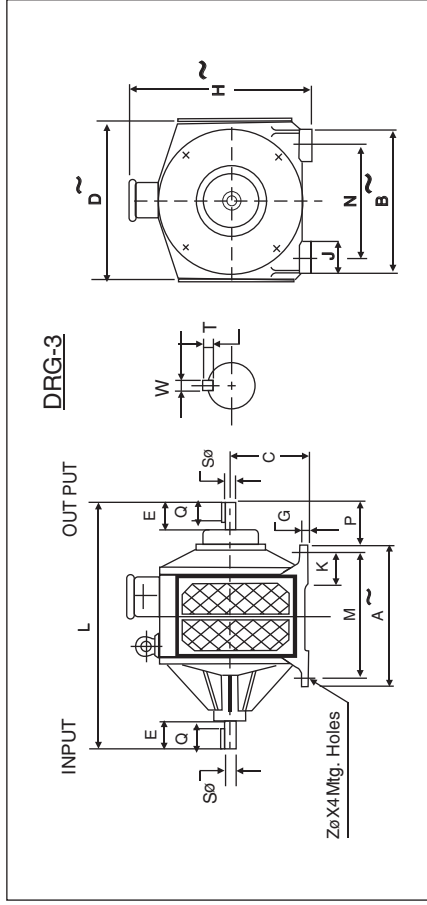
TOLERANCE FOR SHAFT DIA. "S"
 UPTO 50mm k6
 ABOVE 50mm m6

→ Nominal

All Dimensions are in mm

DRG NO.	NOMINAL RATING AT 1500 RPM kW / HP	RATED TORQUE Kg.-m	A	B	C	D	G	H	J	K	L	M	N	P	ZØ	SØ	E	Q	W	T	Approx. Wt Kg.
1	0.37 kW / 0.5 HP	0.24	200	200	105	220	15	275	40	60	400	170	160	80	12	14	40	25	5	5	37
1	0.75 kW / 1.0 HP	0.50	260	230	120	250	15	300	45	80	506	220	185	65	12	19	40	25	6	6	62
1	1.5 kW / 2.0 HP	1.00	300	270	135	290	20	340	55	90	570	260	215	80	12	24	50	35	8	7	90
1	2.2 kW / 3.0 HP	1.45	360	310	170	330	20	380	70	100	655	300	240	90	15	28	60	45	8	7	125
1	3.7 kW / 5.0 HP	2.40	370	310	170	340	20	405	70	100	680	300	240	90	15	28	60	48	8	7	157
1	5.5 kW / 7.5 HP	3.60	400	370	205	390	25	450	80	120	750	340	290	115	19	38	80	65	10	8	238
1	7.5 kW / 10.0 HP	4.90	440	390	205	418	25	475	80	125	842	380	310	120	19	38	80	70	10	8	286
1	11 kW / 15.0 HP	7.13	480	420	235	440	30	540	100	130	925	420	320	130	19	42	90	75	12	8	365
2	15 kW / 20.0 HP	9.70	600	530	280	550	40	540	120	150	1175	540	410	220	24	48	105	85	14	9	430
2	18.5 kW / 25.0 HP	11.80	600	530	280	570	40	560	120	150	1200	540	410	220	24	48	110	90	14	9	555
2	22 kW / 30.0 HP	14.26	600	530	280	570	40	560	120	150	1205	540	410	220	24	48	110	90	14	9	555
2	30 kW / 40.0 HP	19.40	700	600	320	650	45	645	130	210	1295	640	470	220	24	55	110	100	16	10	724
2	37 kW / 50.0 HP	23.75	700	600	320	650	45	645	130	210	1405	640	470	220	24	55	140	120	16	10	830
2	45 kW / 60.0 HP	28.90	790	760	400	810	50	800	130	230	1475	710	630	230	24	65	140	120	18	11	1200
2	55 kW / 75.0 HP	34.90	790	760	400	810	50	800	130	230	1550	710	630	230	24	65	140	120	18	11	1250
2	75 kW / 100.0 HP	49.00	790	760	400	810	50	800	130	230	1675	710	630	230	24	75	140	120	20	12	1300
2	90 kW / 120.0 HP	57.00	790	760	400	810	50	800	130	230	1675	710	630	230	24	75	140	120	20	12	1350

DIMENSIONAL DETAILS - POWERMAG EDDY CURRENT COUPLINGS - MODULAR DESIGN - MODEL FTAC

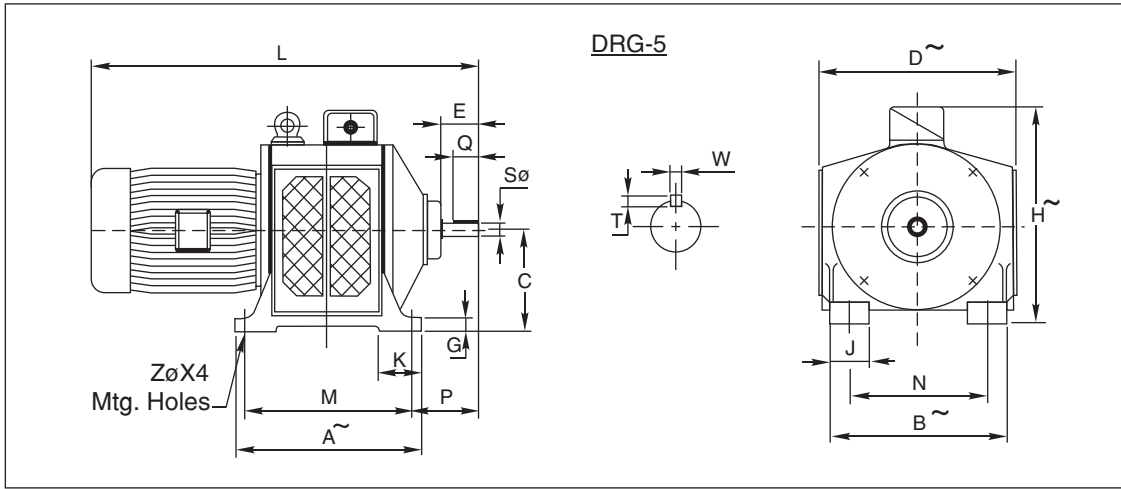


TOLERANCE FOR SHAFT DIA. "S"
 UPTO 50mm k6
 ABOVE 50mm m6

All Dimensions are in mm

DRG NO.	NOMINAL RATING AT 1500 RPM kW / HP	RATED TORQUE Kg.-m	A	B	C	D	G	H	J	K	L	M	N	P	ZØ	SØ	E	Q	W	T	Approx. Wt Kg.
1	0.37 kW / 0.5 HP	0.24	200	200	105	220	15	275	40	60	382	170	160	80	12	14	40	25	5	5	32
1	0.75 kW / 1.0 HP	0.50	260	230	120	250	15	300	45	80	420	220	185	65	12	19	40	25	6	6	54
1	1.5 kW / 2.0 HP	1.00	300	270	135	290	20	340	55	90	489	260	215	80	12	24	50	35	8	7	78
1	2.2 kW / 3.0 HP	1.45	360	310	170	330	20	380	70	100	557	300	240	90	15	28	60	45	8	7	90
1	3.7 kW / 5.0 HP	2.40	370	310	170	340	20	405	70	100	580	300	240	90	15	28	60	48	8	7	130
1	5.5 kW / 7.5 HP	3.60	400	370	205	390	25	450	80	120	670	340	290	115	19	38	80	65	10	8	180
1	7.5 kW / 10.0 HP	4.90	440	390	205	418	25	475	80	125	746	380	310	120	19	38	80	70	10	8	248
1	11 kW / 15.0 HP	7.13	480	420	235	450	30	540	100	130	802	420	320	130	19	42	90	75	12	8	335
2	15 kW / 20.0 HP	9.70	600	530	280	550	40	540	120	150	963	540	410	220	24	48	105	85	14	9	360
2	18.5 kW / 25.0 HP	11.80	600	530	280	570	40	560	120	150	1016	540	410	220	24	48	110	90	14	9	539
2	22 kW / 30.0 HP	14.26	600	530	280	570	40	560	120	150	1016	540	410	220	24	48	110	90	14	9	539
2	30 kW / 40.0 HP	19.40	700	600	320	650	45	645	130	210	1106	640	470	220	24	55	110	100	16	10	660
2	37 kW / 50.0 HP	23.75	700	600	320	650	45	645	130	210	1213	640	470	220	24	55	140	120	16	10	709
2	45 kW / 60.0 HP	28.90	790	760	400	810	50	800	130	230	1340	710	630	230	24	65	140	120	18	11	1160
2	55 kW / 75.0 HP	34.90	790	760	400	810	50	800	130	230	1340	710	630	230	24	65	140	120	18	11	1160
2	75 kW / 100.0 HP	49.00	790	760	400	810	50	800	130	230	1340	710	630	230	24	75	140	120	20	12	1175
2	90 kW / 120.0 HP	57.00	790	760	400	810	50	800	130	230	1340	710	630	230	24	75	140	120	20	12	1225

DIMENSIONAL DETAILS - POWERMAG EDDY CURRENT DRIVES - INTEGRAL DESIGN - MODEL : FTAC

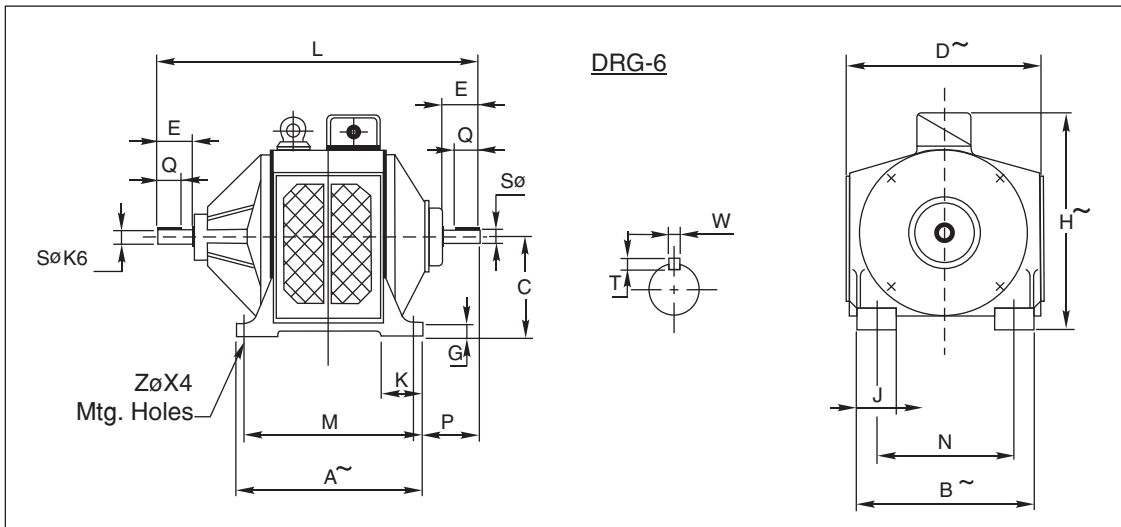


Nominal

All Dimensions are in mm

DRG NO.	NOMINAL RATING AT 3000 RPM kW / HP	RATED TORQUE Kg.-m	A	B	C	D	G	H	J	K	L	M	N	P	ZØ	SØ	E	Q	W	T	Approx.Wt Kg.
5	0.37 kW / 0.5 HP	0.12	200	200	105	220	15	275	40	60	400	170	160	80	12	14	40	25	5	5	37
5	0.75 kW / 1.0 HP	0.25	200	200	105	220	15	275	40	60	450	170	160	80	12	14	40	25	5	5	40
5	1.50 kW / 2.0 HP	0.51	260	230	120	250	15	300	45	80	535	220	185	65	12	19	40	25	6	6	85
5	2.20 kW / 3.0 HP	0.77	300	270	135	290	20	340	55	90	600	260	215	80	12	24	50	35	8	7	100
5	3.70 kW / 5.0 HP	1.28	360	310	170	330	20	380	70	100	650	300	240	90	15	28	60	45	8	7	110
5	5.50 kW / 7.5 HP	1.80	370	310	170	340	20	405	70	100	700	300	240	90	15	28	60	48	8	7	150
5	7.50 kW / 10.0 HP	2.55	400	370	205	390	25	450	80	120	800	340	290	115	19	38	80	65	10	8	250
5	11.0 kW / 15.0 HP	3.60	440	390	205	418	25	475	80	125	900	380	310	120	19	38	80	70	10	8	300

DIMENSIONAL DETAILS - POWERMAG EDDY CURRENT COUPLINGS - MODULAR DESIGN - MODEL : FTAC



All Dimensions are in mm

DRG NO.	NOMINAL RATING AT 3000 RPM kW / HP	RATED TORQUE Kg.-m	A	B	C	D	G	H	J	K	L	M	N	P	ZØ	SØ	E	Q	W	T	Approx.Wt Kg.
6	0.37 kW / 0.5 HP	0.12	200	200	105	220	15	275	40	60	382	170	160	80	12	14	40	25	5	5	32
6	0.75 kW / 1.0 HP	0.25	200	200	105	220	15	275	40	60	382	170	160	80	12	14	40	25	5	5	32
6	1.50 kW / 2.0 HP	0.51	260	230	120	250	15	300	45	80	420	220	185	65	12	19	40	25	6	6	54
6	2.20 kW / 3.0 HP	0.77	300	270	135	290	20	340	55	90	489	260	215	80	12	24	50	35	8	7	78
6	3.70 kW / 5.0 HP	1.28	360	310	170	330	20	380	70	100	557	300	240	90	15	28	60	45	8	7	90
6	5.50 kW / 7.5 HP	1.80	370	310	170	340	20	405	70	100	580	300	240	90	15	28	60	48	8	7	130
6	7.50 kW / 10.0 HP	2.55	400	370	205	390	25	450	80	120	670	340	290	115	19	38	80	65	10	8	180
6	11.0 kW / 15.0 HP	3.60	440	390	205	418	25	475	80	125	746	380	310	120	19	38	80	70	10	8	248